



CONNECT | ENRICH | TRANSFORM

K-12 FIELD TRIP GUIDE AND HANDBOOK



CONNECT | ENRICH | TRANSFORM

LUMCON specializes in designing powerful marine, environmental, and science learning experiences in the marine environments surrounding the Marine Center. The LUMCON Marine Education Program focuses on scientific research promoting student awareness of marine and coastal environments, and human and environmental connections to land and exploring the scientific process emphasizing its role in making environmental decisions. Our educators provide excellent scholastic experiences for all ages to better understand the natural and human-influenced processes affecting coastal Louisiana's landscape and resources. We train the next generation of problem solvers, researchers, and ocean literate citizens. At the Marine Center, students attending field trips are fully integrated into the research culture of a working marine laboratory. Students will often have the chance to eat meals, share research assets, and help some of Louisiana's best marine scientists. LUMCON has something to offer to any student, no matter where they are in their academic careers.

LUMCON Marine Education Programs take advantage of the surrounding environments and the resources at the Marine Center to get students into the natural resources. These include Louisiana's coastal salt marshes, salt marsh creeks and tidal pools, bays, barrier islands, and the coastal ocean. Students use a variety of sampling methods appropriate to the environment they are visiting and collect sediment, plants, nekton, and plankton to observe in the LUMCON laboratories to make connections between themselves and the resources they are learning about.

LUMCON strives to make marine science education accessible to everyone. One of our core values to ensure that everyone has a safe and welcoming place to learn at Louisiana's premier marine science research and education center. This field trip guide and handbook is intended as a starting point in helping you to know what kinds of things that LUMCON has available and to help you when you decide you are ready to schedule a trip. Since LUMCON takes pride in being able to tailor every field trip to the specific needs of each and every group, please do not hesitate to contact the LUMCON Marine Education department to discuss the program options unique to your group.

The following is a list of topics that are included in this document. Each topic is a link that will help you navigate to the section you want.

CONTENTS:

- [**K-12 EDUCATION ACTIVITIES**](#)
- [**RULES & FEES**](#)
- [**LODGING AND MEALS**](#)
- [**HOW TO SCHEDULE**](#)
- [**CONTACT INFORMATION**](#)
- [**POLICIES**](#)
- [**DRIVING DIRECTIONS**](#)
- [**PACKING LISTS**](#)



K-12 EDUCATION

LUMCON educates an average of 3000-4000 students per year through our place-based programs at the Marine Center. LUMCON provides K-12 students with opportunities to spend time in observation and active inquiry focused on Louisiana coastal and marine environments. All program activities are led by LUMCON's highly trained education staff and emphasize the scientific process, skill-building, the processes controlling coastal development and change, the value of Louisiana natural resources, and threats to these resources from natural and anthropogenic factors. All K-12 field trip activities can be linked to NGSS and are designed to be hands-on, place-based, and skill-based to promote student engagement and learning.

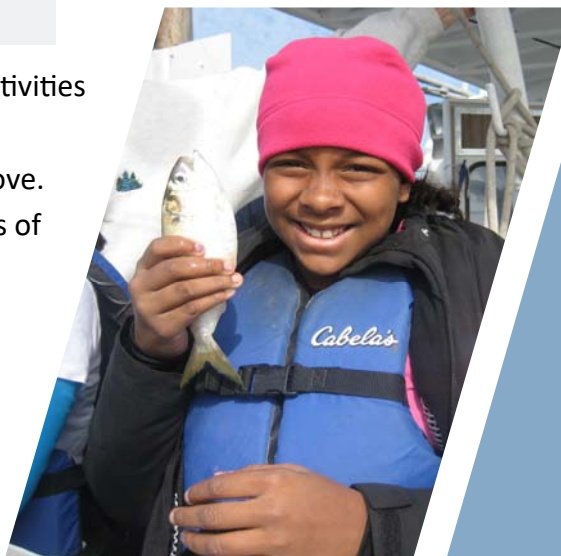
Field Trip duration is based on the availability of the teachers and their students. Most K-12 trips are during the week and sometimes on the weekends. Students can spend between 4 hours and 3 days at the Marine Center participating in activities that are tailored to the skills and experience level of the group. LUMCON can accommodate groups sizes from 10 people to 50 people per day. If group size is greater than 25 people, groups will be divided into two groups and then rotate through activities.

Program Offerings:

Field trips traditionally incorporate field and lab components, and in some cases, lectures or discussions all designed to enhance the best educational experience in marine science. LUMCON Marine Education offers a wide variety of activities that can be modified to highlight a number of topics and themes. LUMCON educators can cover topics or

Coastal Communities		Ecology	
Plant Identification Animal Identification Plankton		Wetland ecology Plant ecology Invertebrate ecology Vertebrate ecology	
Habitats/Ecosystems		Geo Sciences	
Salt Marshes	Bays	Delta Lobe Cycle	Erosion
Barrier Islands	Estuaries	Subsidence	Sediments
River Systems	Ocean		
Biology		Human Impacts on Marine and Coastal Communities	
Organism anatomy/biology Biodiversity Population dynamics Photosynthesis/respiration		Harmful Algal Blooms Marine Debris Pollution Invasive Species Ecosystem Value	
Earth Systems		Current Environmental Topics	
Water cycle Atmosphere/water interactions		Oil spills	Water quality
Oceanography		Restoration	Hypoxia
Exploration	Biology	Climate change	Sea level rise
Bathometry	History	LUMCON	
Processes	Habitats	Current Research Programs Partnerships History	
Marine Science Careers			
Types of careers Career paths Academic paths			

The following pages list all of our most popular activities that you can select from for group activities that incorporate the themes or topics from the list above. Most activities can be modified to meet the needs of any group.



PROGRAM ACTIVITIES

Indoor Activities

Guided Tour of the Marine Center

Grade Level: Appropriate for most grade levels

Duration: 30-60 minutes

Description: Participants get a chance to tour the non-public research areas and interact with some of the science staff (during working hours). Learn more about the DeFelice Marine Center, the research programs, and the valuable marine science research assets housed at the Marine Center.

Plankton Laboratory

Grade Level: Appropriate for most grade levels

Duration: 30-120 minutes

Description: Students learn or practice valuable microscopy skills. Water samples collected by LUMCON educators or by students are taken back to the lab where student can view samples under stereo or compound microscopes to assess population densities and structure. Topics that are often covered in this activities can include types of plankton, aquatic organism classifications, photosynthesis, respiration, food webs, trophic levels, energy transfer, hypoxia, cell structure, and form and function.

Fish External Anatomy Laboratory

Grade Level: Appropriate for grades 4 and up (can only be done when specimens are available)

Duration: 30-70 minutes

Description: Students use frozen or preserved specimens to discover how different fishes use body shape and other adaptations to live in aquatic ecosystems. Students will learn the names of each external body feature and the uses of each of those features. Other topics can include aquatic ecosystems, adaptations to life in the ocean, the physical and chemical nature of water, food webs and energy transfer. This activity can be integrated with the Internal Anatomy Laboratory.

Fish Internal Anatomy Laboratory

Grade Level: Appropriate for grades 6 and up (can only be done when specimens are available)

Duration: 40-70 minutes

Description: Students learn to use proper dissecting techniques to explore the internal anatomy of a common Louisiana fish. Students will participate in a dissection of frozen specimens to learn about the organs and internal features of a fish. Topics covered in this activity can also include form and function, body shapes, predator/prey interactions, hunting and feeding strategies, predator avoidance techniques, and comparisons of living in a terrestrial vs. aquatic ecosystem. This activity can be integrated with the External Anatomy Laboratory.

Indoor Activities (continued)

Invertebrate Anatomy Laboratory

Grade Level: Appropriate for grades 6 and up (can only be done when specimens are available)

Duration: 40-70 minutes

Description: Students learn to use proper dissecting techniques to explore the internal anatomy of a common Louisiana squid or crab species. Students will participate in a dissection of frozen specimens to learn about the organs and internal features of a squid or crab. Topics covered in this activity can also include form and function, external body features, predator/prey interactions, hunting and feeding strategies, predator avoidance techniques, and comparisons of living in a terrestrial vs. aquatic ecosystem.

Data Report Out

Grade Level: Appropriate for most grade levels

Duration: 30-60 minutes

Description: Participants will look at data collected over various activities and connect those data to the world around them. Students can then answer scientific questions or make comparisons based on the data. Students may be asked to graph or make tables of their data and explain why they got the results they did.

Mapping Data

Grade Level: Appropriate for grades 8-12

Duration: 60-120 minutes

Description: Student get a hands-on and bird's-eye view of Louisiana's changing coastal landscape. Through data collection using common field techniques, students will help create maps that will identify areas on Marine Center grounds that are prone to flooding and monitor flooding frequency of those areas. Topics covered in this activity can include land loss, tides, wind and water currents, mapping, use of technology, environmental monitoring, datasets and data management, and restoration.

Remotely Operated Vehicle Construction and Testing Lab

Grade Level: Appropriate for grades 5-12

Duration: 60-120 minutes

Description: Students will work in groups to design, create, invent, and learn about ocean exploration by building frames for ROVs in a makerspace. The ROV is then tested to see whether its design can operate through a series of tests and challenges. ROVs are a great way to engage students in engineering, ocean exploration, ocean issues, teamwork, and possible technical career paths.

Coastal Waters Art Studio

Grade Level: Appropriate for most grade levels

Duration: 40-70 minutes

Description: LUMCON educators will convert one of our science labs to an art makerspace for students to create artwork to help communicate science. Students will be given a challenge determined by their science activities to artistically communicate something they learned here at the Marine Center. In this activity science and art share the space to stretch the creative minds of students.

Outdoor Activities

Scientific Pond Collection

Grade Level: Appropriate for grades Pre-K-5th

Duration: 20-40 minutes

Description: Students explore the life that lives on the marsh edge. Topics include estuaries, marsh habitats, water quality, marsh residents, invertebrates, vertebrates, animal anatomy and body shapes, the scientific process, and introduction to data collection.

Marsh Walk/Salt Marsh Field study

Grade Level: Appropriate for most grade levels

Duration: 20-120 minutes

Description: For lower grade levels this is a valuable introduction to salt marshes. A short walk through a marsh allows students to understand the diversity and valuable animal habitat that salt marshes provide. For higher grade levels this activity becomes more of a study of salt marsh ecology. Students will participate in one or more of the following: elevation profiling, vegetation transects, periwinkle assessment, fiddler crab population assessment, plant identification, and sediment cores.

Water Sampling

Grade Level: Appropriate for grades 5-12

Duration: 40-120 minutes

Description: Students will learn valuable techniques for collecting and analyzing water samples in the field. They will learn what each parameter is, how it relates to other parameters, and what it means to the entire ecosystem. This is a meaningful activity for introducing students to the coastal environment. This activity can easily be incorporated into other activities so student can begin to understand how water quality influences coastal ecosystems and the organisms that live in them.

Salt Marsh Paddling Trip

Grade Level: Students must be 12 years old or older to participate

****Additional costs are associated with this activity. [Current fees](#) are listed on our website.**

Duration: 60-90 minutes

Description: The paddling trip is a guided tour of the salt marsh that surrounds the Marine Center. Students will make stops at areas of interest along the route. Plant and animal life will be discussed, along with some information about how the marshes react to different environmental stresses. This activity is dependent on the weather and water conditions. LUMCON does not guarantee all groups that request this activity will be able to participate. LUMCON educators have the right to cancel for any reason that compromises the safety of participants.

Blue Crab Population Assessment

Grade Level: Appropriate for grades 7-12

****For best experience this activity is best for overnight groups, but it can be modified.**

Duration: 60-90 minutes

Description: Students will learn how to use mark-release-recapture methods to measure the size of the blue crab population in the front pond. Students will be asked to collect crabs, mark them, and release them. They will then use basic math skills to estimate the size of the population using data from other groups.

Outdoor Activities (continued)

Fiddler Crab Population Assessment

Grade Level: Appropriate for grades 3-12

Duration: 60-120 minutes

Description: This activity is designed to get students to understand the fiddler crab population on the grounds around the Marine Center and surrounding salt marsh. Students will use data they collect to make conclusions about how fiddler crabs survive, interact with their environment, choose where to live, how they behave to ensure population survival, and how human activities may impact the population.

Relative Elevation Profiling

Grade Level: Appropriate for grades 6-12

Duration: 60-140 minutes

Description: Students will be taught the techniques to measure and collect data to make an elevation profile for a measured line either on the Marine Center grounds or in the surrounding salt marsh. Students will then graph the data to create a two-dimensional cross sectional view of the landscape along a line between two locations. Topics include field research techniques, the scientific process, marsh ecology, land loss, delta lobe cycle, watersheds, estuaries, and data analysis and management.

Marsh Transecting

Grade Level: Appropriate for grades 6-12

Duration: 60-140 minutes

Description: Students will use field techniques to gather information about salt marsh sites along a measured line through a study area. Student data will consist of vegetation data, fiddler crab and/or periwinkle population data, and water height. Students can then graph data and make conclusions about their research site. Topics covered include vegetation identification, salt marsh ecology, salt marsh inhabitants, land loss, environmental stresses, human impacts on the environment, climate change, sea level rise, and data analysis and management.

Field Investigation (Indoor and Outdoor components)

Grade Level: Appropriate for most grade levels

Duration: 30-120 minutes or longer if needed

Description: Students put the scientific process to work in this exciting activity. Students will practice how to conduct an investigation all the way from question to presentation of results. They will learn how research proposal and budget, experimental design, variables, data table setup and analysis, graphing, and drawing conclusions from their data all come together to create scientific findings.

Research Cruise

Grade Level: Students must be 12 years old or older to participate

****Additional costs are associated with this activity. [Current fees](#) are listed on our website.**

Duration: 3-4 hours

Description: This activity gives students that opportunity to experience what it is like to do science on board a research vessel. Students will board the R/V *Acadaina* and participate in the collection of plankton, nekton, and benthic samples. This is a great way for students to learn more about bay ecosystems and estuaries. All activities on board are about collecting data that helps LUMCON monitor the area around the Marine Center. Students should be prepared to work to sort through samples and collect data needed for post-cruise activities.



CONNECT | ENRICH | TRANSFORM

Example agendas for a Half Day Field Trip (Average length of ~4 hours)

- | | |
|------------------------------|----------------------------|
| • Group Arrives | • Group Arrives |
| • Welcome and Introduction | • Welcome and Introduction |
| • Scientific Pond Collection | • Water Quality Sampling |
| • LUNCH | • Marsh walk |
| • Plankton Lab | • LUNCH |
| • Tour of the Marine Center | • Group Departs |
| • Group Departs | |

Example agendas for a Full Day Field Trip (Average length of ~6 hours)

- | | |
|------------------------------|----------------------------|
| • Group Arrives | • Group Arrives |
| • Welcome and Introduction | • Welcome and Introduction |
| • Scientific Pond Collection | • R/V Acadiana Trip |
| • Water Quality Sampling | • LUNCH |
| • LUNCH | • Plankton Lab |
| • Plankton Lab | • Salt marsh Paddling Trip |
| • Tour of the Marine Center | • Group Departs |
| • Group Departs | |

Example agenda for an overnight trip

Not all overnight trips need to be 3 days and 2 nights. Overnight trips can be 2 days and one night as well.

Day 1

- Group Arrives
- DINNER
- Welcome and Introduction
- Introduction to Louisiana's wetlands lecture

Day 2

- BREAKFAST
- R/V Acadiana Cruise
- LUNCH
- Salt marsh Paddling Trip
- Scientific Pond Collection
- DINNER
- Plankton Lab
- Fish Anatomy lab

Day 3

- BREAKFAST
- Group Departs

K-12 GROUP RULES:

- Wear shoes inside and outside (not necessary in your dorm room). R/V *Acadiana* and marsh excursions require closed-toe shoes.
- Do not apply insect repellent or spray on sunscreen indoors. The volatile compounds enter the air exchange system and can damage laboratory cultures.
- There are security cameras recording video of each hallway in all areas of the marine center.
- No one is allowed in the research areas without a LUMCON educator.
- In case of a fire, alarms will sound. Exit by the nearest door and meet near the driveway in the front of the building.
- No running is allowed in the building. Do not leave equipment, sports equipment, trash, clothing or any other item in the yard. Pick up after yourselves.
- No electronic equipment is allowed during activities. Leave cellphones in your rooms or bags unless the educator tells you otherwise. LUMCON take no responsibility for lost or broken phones.
- The adults with the group are responsible for the behavior of their students for the duration of the trip.

Additional Rules for Overnight Groups:

- You are responsible for the condition of your room and the lounge when you leave it. It should be reasonably clean and intact. You will be charged if extra cleaning or repairs are required. Lost keys result in a \$10 fine.
- Quiet hours are from 9:30pm to 6:00am. Please be in your room and quiet during those hours. Please be reasonably quiet in dorms as others may be sleeping. NO BOYS IN GIRLS' ROOMS AND NO GIRLS IN BOYS' ROOMS EVER!
- There is a security guard on duty all night. He/she patrols the facility through the night and should not have to correct any behavior problems.
- The Marine Center research areas (past the cafeteria including the tower), and areas below the building beyond the dormitories are CLOSED from 6:00pm until 7:00am.
- An adult must be with students (except when they are in their dorm rooms) at all times, unless given permission by the educator. No student is allowed outside after dark unless given permission by the educator.
- There is no fishing allowed anywhere but at the back dock, and no fishing after 10 pm. An adult must be with you at all times if you are fishing.
- The lounge is off limits to K-12 groups. Students may utilize the cafeteria during off hours.

PLEASE NOTE: Educators work to minimize the dangers inherent in laboratory and field activities. Each educator is authorized to cancel any field trip because of inclement weather, poor behavior of students or chaperones, inadequate numbers of chaperones, or any other reason.

Fees:

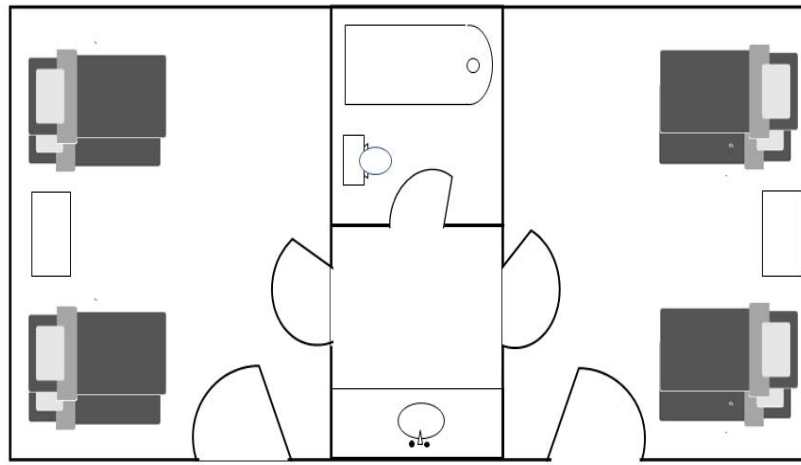
One core value of the LUMCON Education and Outreach programs is to ensure every learner who is interested in marine science has access to a high quality marine science education. This mean removing all possible barriers including financial ones. For this reason, LUMCON's fee structures have been designed to offer K-12 programs for the amount it costs LUMCON to provide them.

To see a list of the current fees for k-12 groups you can [click this link](#). The link will take you to a pdf document that is housed on our website.

If you have any questions about our fees or just need a brief explanation please contact the Associate Director of Education & Outreach at education@lumcon.edu. Once you make a reservation you will be provided with a reservation estimate for your trip that will detail all the costs associated with your requested activities.

Lodging and Meals:

Lodging: LUMCON has on-site accommodations for student groups that are interested in our overnight program options. Rooms are bunk style dorm rooms arranged so 2 rooms share a full bathroom. There is also a 12 person bunk room. The bunk room has its own a bathroom with three sinks, toilets, and showers. LUMCON also has 2 rooms for guests that require handicap accessible accommodations. If you or someone in your group is in need of these accommodations please let us know. Every room has access to a balcony with great views of the LUMCON property and surrounding saltmarsh. LUMCON supplies sheets, 1 pillowcase, 1 pillow, 1 light weight blanket, 1 towel, and 1 washcloth. Guests are encouraged to bring extra blankets, a sleeping bag, and an extra pillow if needed for their comfort.



Basic layout of dorm rooms.

Meals: LUMCON has a full-service cafeteria that can serve meals to visiting groups of 10 people or more. Three meals can be served daily. The meal times are set at 7am (breakfast), 12pm (lunch), and 6pm (dinner). The chef is able to serve meals that accommodate dietary needs and restrictions such as vegetarian, vegan, and gluten-free. Other requests will be considered on a case-by-case basis and accommodated as possible.

For groups that will be in the field during meal times the cafeteria can provide bag lunches. These lunches are prepared and packed by kitchen staff and can be picked up before the group leaves for the field experience. Some groups will request bag lunches so they can be eaten on the road after the education programming has been concluded.

Menus are chef's choice style meals that are designed to meet a wide variety of tastes. If your group would like to have a seafood dinner, the cafeteria can accommodate. You may request a seafood boil featuring shrimp, crab, or crawfish depending on the season.

HOW TO SCHEDULE:

Understanding that educators have very little time, LUMCON has a very simple scheduling process. Date availability is limited during certain parts of the year. It is helpful if you let us know what month or three dates (in order of preference) that you are interested in visiting. Accommodating requests for trips is one of our highest priorities, so we will work hard to find dates that work for you and for us.

To check availability and schedule a field trip for your group, you can call or email the Associate Director of Education and Outreach, **Murt Conover, 985-851-2860, mconover@lumcon.edu**

The following information will be requested to complete a reservation. Additional questions may be asked depending on the specifics of your requested experience.

- Group leader name and contact information
- Number of people in your group (students and adults)
- Billing address
- Activities you are interested in having provided
- Course title or grade level
- Estimated arrival and departure times

Notification of Field Trip Reservation Status:

Individuals will be sent a reservation estimate by email from the LUMCON Receptionist. This email will also include the following:

- Requests for additional information
- An estimate of cost based on the requested trip details
- The deposit and cancellation policy, a list of general LUMCON policies, driving directions, a packing list, and group rules

Please provide any information needed promptly. Changes to an existing reservation (arrival date, time, number of participants, activities, etc.) **MUST** be approved and confirmed with the Associate Director of Education and Outreach before the field trip. Your deposit must be paid to complete your reservation.

Any questions that you may have about educational activities (including boat trips), changes to numbers, or change of date can be directed to the Associate Director of Education & Outreach (mconover@lumcon.edu). Changes or questions about housing, meals, and other general questions about payment, your invoice, etc., can be directed to reservations@lumcon.edu.



Contact Information:

- To schedule a trip or to make general inquiries about program offerings and activities please contact Murt Conover, Associate Director of Education and Outreach at (985) 851-2860 or mconover@lumcon.edu.
- If you already have a trip scheduled and have questions or need to make changes to you reservations you can send an email to reservations@lumcon.edu.
- To pay a deposit or make a final payment on a trip reservation invoice you can contact Accounts Receivable at (985) 851-2847.





CONNECT | ENRICH | TRANSFORM

Policies:

This page contains general policies for LUMCON. The deposit policy and the policies for making changes to a reservation or cancelling a reservation are on the following page.

- If private accommodations in a dorm room are requested, the person(s) reserving the room will be charged for all the beds in that room at the current prices for beds.
- All shared baths (between adjoining dorm rooms) must be shared by the same gender. Apartments are the only accommodations available which have private baths.
- Check out time on the day of departure is 1:00pm. All belongings must be out of the room by that time or the group will be charged for an additional night.
- Meals are served to guests upon request at the times listed below. Special service times can be requested, but the request MUST be made at least 10 business days before service date.
 - Breakfast at 7am
 - Lunch at 12pm
 - Dinner at 6pm
- A minimum of 10 individuals is required in a group to facilitate preparation of meals by the LUMCON cafeteria.
- Only one (1) key to each dorm room or apartment will be issued to the group leader upon check-in. The group will be billed \$10.00 for any keys that are not returned to the receptionist or security guard at the end of your group's stay at the marine center.
- Security guards are not authorized to make any changes to room assignments or billing.
- Unless arrangements are made prior to check-in, final payments must be paid to the receptionist Monday through Friday between the hours of 8:00am to 4:00pm. Credit card payment can be made by phone by calling the receptionist during business hours.
- Extra fees will be charged if a room is left in a condition that requires extra cleaning.
- No pets or firearms are allowed on LUMCON property.
- Groups (adult groups only) that are interested in having alcoholic beverages in public areas must complete and submit an Alcohol Use Permit Form to the Executive Director's office for approval prior to their reservation date.



CONNECT | ENRICH | TRANSFORM

Policies:

The deposit policy and the policies for making changes to a reservation or cancelling a reservation.

Group Reservation Deposit Policy:

- Groups making a reservation for any use of LUMCON facilities, vessels, or education programming are subject to paying a non-refundable deposit of 30% of their original reservation request total.
- Groups will not be refunded any of the deposit for cancellation or changes in the number of people. This deposit is due within 10 business days of the reservation request date.
- Failure in paying the deposit will result in the termination of the reservation. The deposit requirement can be waived or refunded at the discretion of the Executive Director for extenuating circumstances (e.g. emergencies, storm events, marine center closure).

Education Group Number Reduction or Addition Policy:

- Fees for education group visits are locked-in 10 business days before a group's arrival date.
- Groups that do not notify LUMCON about reductions in the number of people attending within 10 business days before their scheduled arrival date will be billed for the number of meals, rooms, and educators originally requested/required.
- Groups that do not notify LUMCON about the addition to the number of people within 10 business days before their scheduled arrival date will be charged fees for the additional meals, beds, or educators that are required and available. In addition, a penalty fee of 10% will be added to your bill.
- The Associate Director of Education & Outreach must approve all changes to education group numbers.

Request for Changes to Reservation Dates:

- Changes to reservation dates can be requested up to 10 business days before the originally requested dates, but there is no guarantee of being able to reschedule.
- Education groups can only change reservation dates with permission from the Associate Director of Education & Outreach.
- Changes in dates will only be approved if dates are available for rescheduling.

Directions to The DeFelice Marine Center

From New Orleans Airport (2 hours)

- Exit the airport and turn right on US 61.
- Travel 3 miles to I-310 South to Houma.
- Drive 9 miles to US 90 West and exit right.
- Drive 24 miles.
- Take **exit 210** to **HOUMA** (LA 182).
- Turn left and drive to the first traffic light to LA 3087.
- Follow LA 3087 through one signal light and across the Intracoastal Canal bridge.
- Go through two signal lights; turn left onto LA 24.
- Continue straight on HWY 24 until HWY 56. HWY 24 turns to the left to Presque Isle, Bourg, and Montegut.
- HWY 56 heads straight and south.
- Continue straight on HWY 56 south to Chauvin and Cocodrie (approximately 18 miles).

From New Orleans and points east (2 hours)

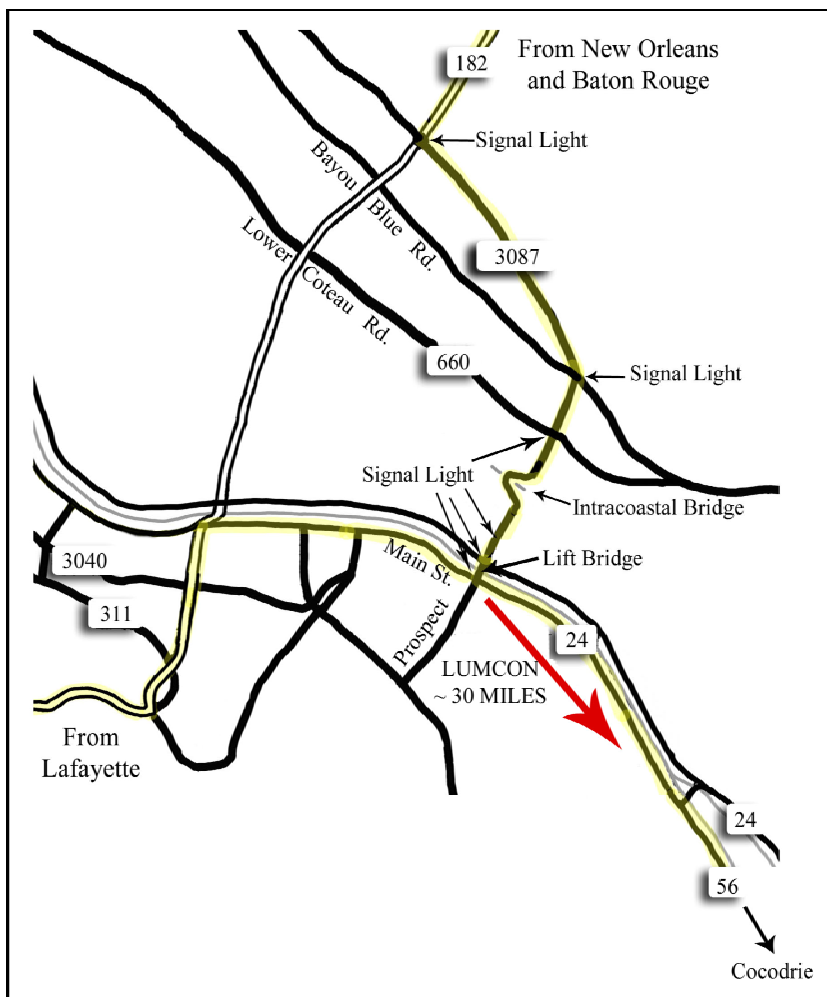
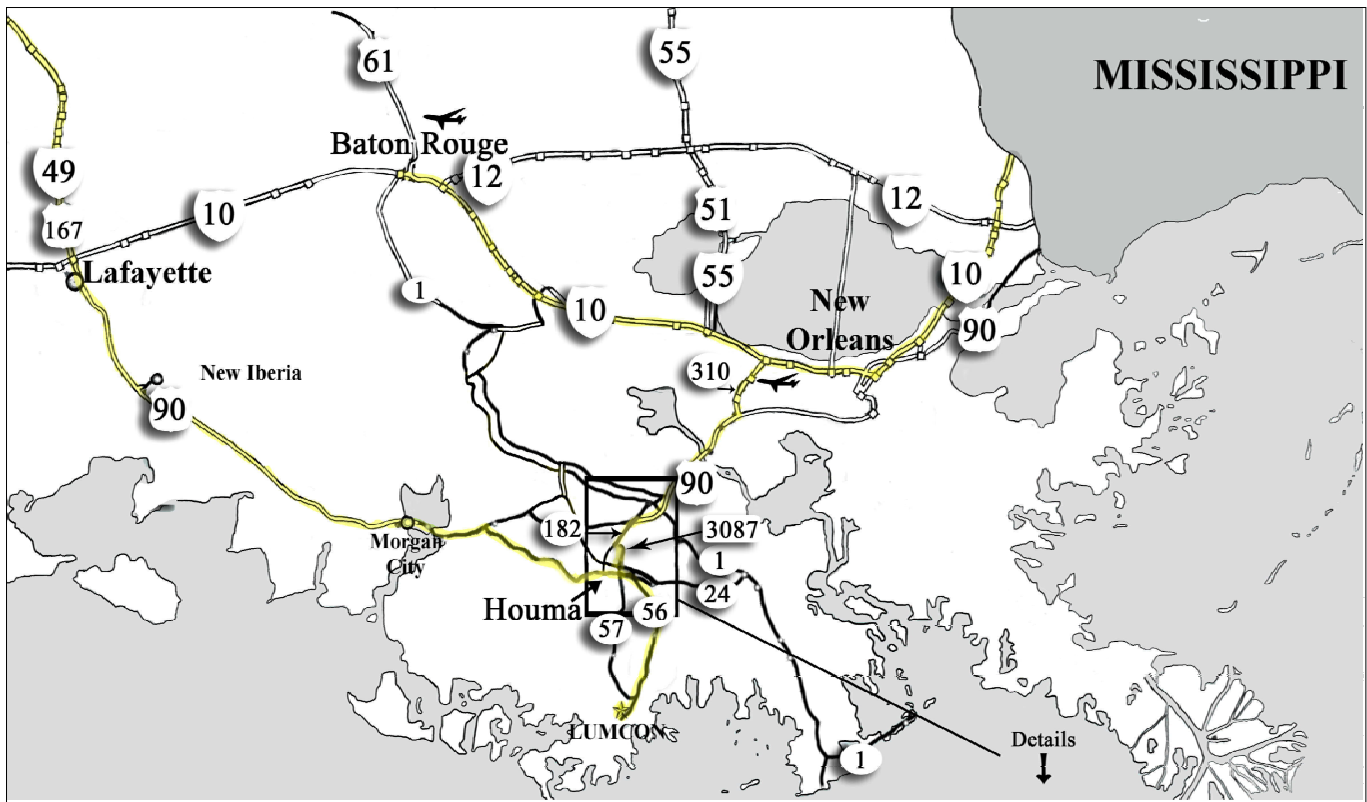
- I-10 to I-310 South to Houma.
- Drive approximately 11 miles to US 90 West and exit right.
- Drive 24 miles.
- Take exit 210 to **HOUMA** (LA 182).
- Turn left and drive to the first traffic light to LA 3087 (this is a new construction four-lane road).
- Follow LA 3087 through one signal light and across the Intracoastal Canal bridge.
- Go through two signal lights; cross the bayou at the third light, turn left onto LA 24.
- Continue straight on HWY 24 until it becomes HWY 56. HWY 24 turns to the left to Presque Isle, Bourg, and Montegut. HWY 56 heads straight and south
- Continue straight on HWY 56 south to Chauvin and Cocodrie (approximately 18 miles).

From Lafayette and points west (3 hours)

- I-10, exit south on HWY 167 to HWY 90 to Morgan City.
- Stay on HWY 90 through Morgan City into Houma.
- Take HOUMA exit (HWY 24).
- Stay on HWY 24 until it becomes HWY 56. HWY 24 turns to the left to Presque Isle, Bourg, and Montegut. HWY 56 heads straight and south.
- Continue straight on HWY 56 south to Chauvin and Cocodrie (approximately 18 miles).

From Baton Rouge and points north (3 hours)

- I-10 to Donaldsonville, Sorrento, and Sunshine Bridge exit to HWY 22.
- Follow to Spur 70 to Napoleonville, Thibodaux.
- Head south on HWY 1 or HWY 308 (both parallel Bayou Lafourche) to Thibodaux.
- In Thibodaux, switch to HWY 24 and follow it into and through Houma.
- Stay on HWY 24 until it intersects with HWY 56. HWY 24 turns left to Presque Isle, Bourg, and Montegut. HWY 56 heads straight and south.
- Continue straight on HWY 56 south to Chauvin and Cocodrie (approximately 18 miles).





CONNECT | ENRICH | TRANSFORM

What to bring to LUMCON for Day Trip Visitors

...besides interest, enthusiasm and eagerness to learn about Louisiana's coastal environment

Clothing

- Layers appropriate for different temperatures/insect conditions
(it may be cold and wet so bring enough clothes so you have something dry to put on)
- Rain gear
- Closed-toe shoes that can get wet and muddy like rubber boots or old sneakers
 - ♦ NO sandals, crocs or flip-flops in the field!
- Maybe an extra pair of shoes to change into if your first pair gets wet or muddy

Protection

- Long sleeves
- Sunscreen
- Insect repellent (Do not apply in the building; it gets into the air exchange system)
- Hat
- Sunglasses
- Water bottle

Comfort Items

- Snacks
- Lunch if your group is not getting meals from the cafeteria

***** If your group is going on the R/V Acadiana and if you think you might get seasick, you may bring some sort of medication, or homeopathic medication.*** Follow the directions for these medicines. Please tell us if you take medicine for seasickness or if you are feeling seasick, so we can keep an eye on you. Some people get seasick and we want to make sure you are safe.



CONNECT | ENRICH | TRANSFORM

What to bring to LUMCON for Overnight Trip Visitors

...besides interest, enthusiasm and eagerness to learn about Louisiana's coastal environment

Clothing

- Layers appropriate for different temperatures/insect conditions (it may be cold and wet so bring enough clothes so you have something dry to put on)
- Rain gear
- Closed-toe shoes that can get wet and muddy like rubber boots or old sneakers
 - ♦ NO sandals, crocs or flip-flops in the field, please feel free to bring them to wear in the shower or dorms.

Protection

- Long sleeves
- Sunscreen
- Insect repellent (Do not apply in the building; it gets into the air exchange system)
- Hat
- Sunglasses
- Water Bottle
- Comfort items
- Extra towel (some are provided but you may want extra)
- Blanket (bed linens are provided but bring an extra blanket or sleeping bag it can get cold in the dorm rooms)
- ***LUMCON supplies linens, 2 bath towels, 2 face towels, and 2 light blankets, and a pillow to each guest. Bring extra to make yourself comfortable if you feel the need.***

Toiletries/necessities

- Alarm Clock
- Don't forget your toothbrush or toothpaste; shampoo, soap, etc.
- Whatever prescription and over the counter medications you use

** If your group is going on the R/V Acadiana and if you think you might get seasick, you may bring some sort of medication, or homeopathic medication. Follow the directions for these medicines. Please tell us if you take medicine for seasickness or if you are feeling seasick, so we can keep an eye on you. Some people get seasick and we want to make sure you are safe.